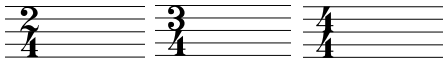


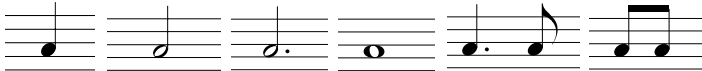
SCDBA All-District Auditions Sightreading Criteria


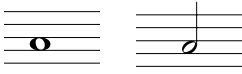
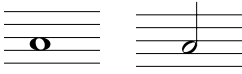
Middle School SCDBA All-District Sightreading Criteria

Key: Concert F, B-flat, E-flat Major.
Maximum of two (2) keys with a maximum of two key changes.

Meter: 

Maximum of one meter change.

Rhythm: Basic Patterns 

Percussion Only  | Other Percussion requirements
Rolls on: 
Flams 

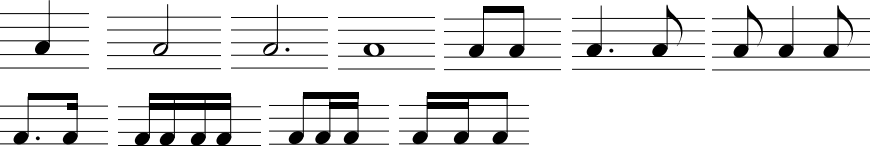
Length: no longer than 8 measures in 4/4 and 3/4 and no longer than 16 measures in 2/4.

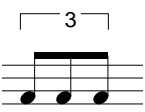
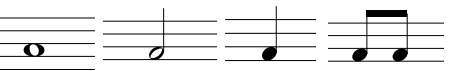
High School (9/10) SCDBA All-District Band Auditions Sightreading Criteria

Key: Concert F, B-flat, E-flat Major and A-flat Major.
Maximum of two (2) keys with a maximum of two (2) key changes.

Meter: 

Maximum of two (2) meters with a maximum of two (2) meter changes.

Rhythm: Basic Patterns 

Percussion Only  | Other Percussion requirements
Rolls on: 


Flams and ruffs

Length: no longer than 8 measures in 4/4 and 3/4 and no longer than 16 measures in 2/4 and cut time.

SCDBA All-District Auditions Sightreading Criteria

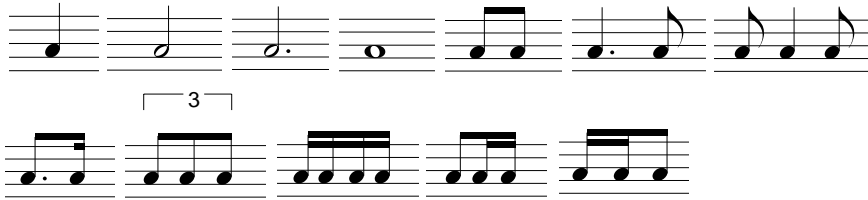
Senior High (11/12) SCDBA All-District Band Auditions Sightreading Criteria

Key: Concert F, B-flat, E-flat, A-flat Major.
Maximum of two (2) key changes.

Meter: 

Maximum of two (2) meter changes.

Rhythm: Basic Patterns



Other Percussion requirements
Rolls: Same as High School
Flams and ruffs

Length: no longer than 8 measures in 4/4 and 3/4 and no longer than 16 measures in 2/4, cut time and 6/8.

SCDBA All-District Auditions Sightreading Criteria

Sight-reading Ranges

Middle School

High School (9/10)

Senior High (11/12)

The image displays a musical score for sight-reading ranges across three levels: Middle School, High School (9/10), and Senior High (11/12). The instruments listed on the left are Flute/Piccolo, Oboe, Bassoon, Clarinet, Low Clarinets, Alto Saxophone, Low Saxs, Trumpets, French Horns, Trombone/Euphonium, and Tuba. Each instrument part is represented by a staff with a treble or bass clef and a common time signature (C). The notes are marked with a '1' above them, indicating the first reading. The ranges are indicated by horizontal lines above the notes. The notes are as follows:

Instrument	Middle School	High School (9/10)	Senior High (11/12)
Flute/Piccolo	C4	C4	B3
Oboe	C4	C4	C4
Bassoon	C3	C3	C3
Clarinet	C4	C4	B3
Low Clarinets	C4	C4	C4
Alto Saxophone	C4	C4	C4
Low Saxs	C4	C4	C4
Trumpets	B3	C4	C4
French Horns	C4	B3	C4
Trombone/Euphonium	C3	C3	C3
Tuba	C2	C2	C2